



Helping Hands for Seniors

# SENIOR SCROLL

## September 2017

### Phones

970-352-9348 Client  
970-573-5818  
Volunteer

### Office Hours

Monday-Friday  
9 a.m. to 4 p.m.

### Board of Directors

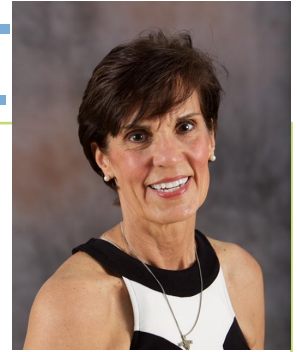
Tom Allen  
Donna Dosch  
Chris Downen  
Ben Gonzales  
Michael Muskin  
Kent Naughton  
Andrew Romero  
Joyce Scott  
Kate Struzenberg

### Inside this issue:

Closure News	2
Introducing Jordelle Antonio	2
Janet's Update Continued	2
Volunteer Spotlight	3
Good-Bye Becky	3
Ride & Revel! Sponsor Thanks	4

### Updates from Janet Bedingfield

There's so much going on at SRS these days that I spin for a while before I get traction, pull my thoughts together, and start writing – but all those goings-on are good and necessary due to growth, both current and anticipated. During a brief respite between events and deadlines, we are focused on SRS's big picture and long range goals. We are also seeing the end of an era due to staffing transitions, so we're looking both back and forward; remembering and valuing our history while looking to our future potential.



I've pulled together a group of five leaders from Weld's non-profit world to create Weld Senior Services Task Force, a group which is working toward the creation of a Weld Senior Services Coalition. The Coalition's purpose will be to identify and rectify gaps and duplications in Weld senior services, and to leverage the collaborative to increase awareness and support of senior needs as outlined in the State of Colorado's Strategic Action Planning Group on Aging's 2016 report. The outcome of the Coalition's work has the potential for better efficiencies and bigger dreams and, though the seed for this group was sown 18 months ago, it aligns with United Way's recently announced Collective Impact Funding model, which is indicative of the Coalition's value and timeliness. Task Force members include Eva Jewell, Regional Director of Area Agency on Aging (AAA); Lyle Smith-Graybeal, VP of Community Impact at United Way of Weld County (UWWC); Enita Haut, Regional Director of Catholic Charities; Rand Morgan, President and CEO of Community Foundation Serving Greeley & Weld County; and Holly Darby, Community Outreach Manager at AAA. SRS's VISTA, Debra Bianchi, is conducting a needs assessment for the Task Force. Check back for updates in future newsletters!

Additionally, with the help of Mark Holdt from Mountain (page 2)

### Senior Resource Services Staff

Janet Bedingfield - Executive Director  
Jordelle Antonio - Office Assistant  
Debra Bianchi - VISTA

Shelby Florio - Volunteer Coordinator  
Jenni Moser - Administrative Assistant

**Senior Resource Services Will Be CLOSED  
& transportation services will NOT be Available  
in observance of**

**Thanksgiving  
November 23rd & 24th**

**&**

**Christmas  
December 25th & 26th**



Helping Hands for Seniors

(continued from page 1) Sage Consulting, the SRS Board of Directors and Staff will complete SRS's first ever comprehensive long-range strategic plan during two mini-retreats in October and November. The agenda items are designed to ensure that we put SRS on the right track for 20 years into its future, which will be accomplished by having the right structures and people in place to enable us to keep up with the demand brought on by the quickly increasing senior population. Exciting stuff!

Finally, we have said, "See you again soon," to Becky Sperber, who began working part-time at SRS in January of 2007, two months after SRS received its 501(c)3 status and six months after she retired from AIMS Community College where she served as the Executive Assistant and Office Manager at the Corporate Center. She will continue as a volunteer driver for SRS, but morning callers will no longer hear her sweet, calm voice. Becky has trained Jenni Moser, who worked afternoons opposite Becky, to take over her duties, so you can expect a different yet familiar and equally caring voice when you call.

Change, change, and more change. It's not always easy or restful, and it's certainly not free of stress, but it's what's required of us if we're going to meet the needs of Weld County seniors, and that is both our mission and our passion. Thank you for being on this journey of change with us—we are grateful for your good company!

Smiles and blessings,  
JB



## **Office Assistant Jordelle Antonio**

Jordelle was born and raised on the Big Island of Hawaii and moved to Greeley, CO to attend the University of Northern Colorado. She earned her BS in Human Services with a minor in Psychology in June of 2017. Jordelle developed a strong sense of devotion to the senior population while spending time with her aging grandmother, and that passion increased after taking multiple gerontology classes while at UNC. During her free time, she likes to work out, hang out with her boyfriend and pets, and keep in touch with her family in Hawaii, including an identical twin sister. Jordelle deeply admires the mission of Senior Resource Services, and is thrilled to be a part of the SRS team.

## VOLUNTEER SPOTLIGHT—THANK YOU, TERRY!



SRS Volunteer Terry Cross spent his career as a Peterbilt salesman, retiring in early 2017. He has been married to his wife, Patty, for 22 years and has two children and two grandchildren. Terry was a Commissioned Officer in the Army and was stationed at Fort Carson in Colorado Springs. He is an avid sports fan, with the Broncos and Colorado college teams topping his list of favorites. He is a Kansas State Alum, but after so many years living in Colorado, his allegiance has switched to Colorado teams. Terry enjoys golfing in his spare time and

- ◆ Has been a volunteer with SRS since 2015.
- ◆ Has volunteered a total of 257 hours while providing a total of 246 client rides so far this year as well as helping recruit at community events.
- ◆ His favorite thing about being an SRS volunteer is the gratitude and appreciation he receives from our clients. He gets satisfaction from providing transportation and is proud to be an SRS volunteer.

Be sure to “Like” the Ride&Revel! Facebook page @rideand revel

## Thanks for All You’ve Given SRS!

It’s an understatement to say that without Becky Sperber’s commitment and hard work SRS wouldn’t be where it is today. She has been absolutely critical to its success from the beginning. In her ten years with the agency Becky has done whatever it took to make the Transportation Program succeed, from grant writing and contracts to scheduling rides and manually tracking data. Even in this day of easy access via smart phones, having her history of SRS, wealth of knowledge, and office expertise in the next room—within hollering distance—will be greatly missed. Thank you, Becky, we are grateful to you and you will certainly be missed in countless ways!





Helping Hands for Seniors



### **Titanium Sponsor**

Monfort Family Foundation

### **Aluminum Sponsor**

Meeker's A CO Kitchen & Bar

### **Steel Sponsors**

Agrium  
Bank of Colorado  
Brix Taphouse & Brewery  
Burris Optics  
Cache Bank & Trust  
June's Team, SEARS Real Estate  
Market Watch  
Noble Energy  
Orthodontic Associates  
Poudre Valley REA  
Raven Signs  
Work Out West

### **Contributing Sponsors**

Best of Greeley Magazine  
Bike Peddler  
Broken Plow Brewery  
Chick Fil-A  
Crabtree Brewing Company  
Christian Brothers Automotive  
Currier Inn  
DMG Solutions  
El Cielo  
Downtown Development Association  
Fairacres Manor  
Grace Pointe Continuing Care  
Grand Lake's 16th Street Tavern  
Greeley Tribune  
Hanger Prosthetics & Orthotics  
Honey Bunchies  
KFKA 1310  
Knights of Columbus  
Left Hand Graphics  
Marketing Worx

### **Meadowview of Greeley**

Mineral Resources  
Minuteman Press  
Muscle Restoration Therapy  
Noosa Yoghurt  
North Range Behavioral Health  
Northern Colorado Rehab Hospital  
Northern Colorado Traffic Control  
Otterbox  
Pirate Radio 104.7  
Pizza Street  
Ride GREELEY  
Roche Construction  
Sam's Club  
TCBY Greeley  
The Human Bean  
Town Square Media  
True Quest Real Estate  
Weldwerks Brewing  
Wiley Roots Brewing Company  
Wing Shack

Non-profit  
US Postage  
**PAID**  
Permit 88  
Greeley, CO

Senior Resource Services  
800 8th Ave, Ste. #229  
Greeley, CO 80631